



Ireland Cycling 8 Days

Summary

Length

8 days/7 nights with at least 6 of days cycling

Dates

Any start date between April 1 and October 31

We recommend to start this tour on a Friday to see the open air market in Ennis held every Saturday

Level

Moderate 20-40+ miles daily

Terrain: Mostly level with some rolling hills

Itinerary

Having cycled all over Ireland, we have found the western coast region including Galway, Connemara, & the Aran Islands to have the most spectacular scenery, with a tremendous abundance of historical monuments, a rich and unique culture, warm and inviting people, and surprisingly few tourists. The hotels and food are a highlight with genuine hospitality.



Day 1

Arrival day: Ennis. You'll start our tour from Ennis, a pleasant village in County Clare with an 11th century Friary at its center. You will want

to arrive in time to visit the museum in town, which gives a good introduction to the region.

Day 2

Doolin. You begin cycling from Ennis north to county Clare through the region known as the Burren, where megalithic tombs, stone forts and castles are in abundance. (44km)

Day 3

Doolin. You'll cycle the coastal road to Ballyvaughan; we recommend enjoying lunch at a traditional café in this village. Options for the return are either along the Burren Way or via Lisdoonvarna. (55 or 61km)

Day 4

Aran Island. Inishmore. Ferry to Aran Islands. No visit to this part of Ireland would be complete without a visit to Inishmore, where horse-drawn carriages transport luggage and everyone (including the locals) ride bikes.

Day 5

Inishmore. Enjoy a full day on Inishmore with a chance to visit Dun Aengus; this stone fort is one of the finest example of Iron age building in Europe. Spend a typical Irish evening in the pubs in Kilronan.



Day 6

Cashel - After a short ferry ride to Rosaveel, you will continue past monastic remains in lush countryside on rural roads to Cashel. (42 km or 60 km)

Day 7

Cashel - Your ride continues to Clifden, under the dramatic Twelve Bens mountains. Along the way, you will visit Roundstone, where the *bodhran* instruments are still made by hand and a loop ride along Skye Road, arguably one of the the most scenic routes in Ireland. (56 km or 100km)

Day 8

Linger before departure.



Randonnée Tours

How to get there?

Your tour begins from Ennis, which is close to Shannon airport. There are frequent buses that leave from the airport to Ennis, and take approximately 45 minutes.

If you prefer to fly into Dublin, there are train connections to Galway (approximately 4 hours travel time); from Galway buses depart frequently for Ennis and take approximately 1 hour.

Reservations for trains can be made at Rail Europe at 1-800-387-6782 or visiting their web site at www.raileurope.com

Our recommendation would be to fly into Shannon and leave time after the trip for visiting Galway.

After your trip You can transfer to Galway from Clifden easily by bus; Bus Eireann has departures at 9:00 arriving at 11:05.

If you are continuing on to Shannon airport there is a departure from Galway at 12:05 which arrives at Shannon airport at 1:50. For info and booking www.buseireann.ie

We will provide you more information with your confirmation package.

Accommodation

Classic



Temple Gate Hotel, Ennis

In the centre of the historic town of Ennis, rests on the site of a 19th century Convent of Mercy with a fascinating and eventful history.



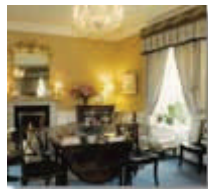
Atlantic View House, Doolin

A very charming family run hotel with views of the Cliffs of Moher.



Kilmurvey House, Aran Islands

This venerable b&b has been hosting guests for over 3 generations. Recent guests have included Hollywood celebrities who come, as we do, for the wonderful hospitality.



The Zetland country house, Cashel

This 4 star hotel stands on the edge of Cashel Bay in Connemara and is set amid a landscape of mountains, lakes and a sea-coast brimming with white sandy beaches. Truly an oasis of tranquility and warm hospitality, a superb hotel to finish your stay in Ireland.



Randonnée Tours

The price includes:

- 7 nights hotels
- All breakfasts and 1 dinner
- Use of a top quality 21-speed hybrid bike complete with handlebar bag, pump, and all the necessary accessories for changing flats. We recommend that you bring your own helmet for safety and hygiene reasons
- Detailed route instructions and map
- Luggage transfers (we enlist your help to take your baggage onto and off the ferry)
- Area Manager available throughout the tour

"Many thanks to Eve Cabanel for setting up a great trip, and for being incredibly helpful with all my questions and backup information. Your personal help was invaluable. It was a good trip and I am glad I went. The route descriptions were quite accurate, and the restaurant recommendations accurate and good to boot. Again thank you for your help throughout this trip."

- A. Rosen

Accommodation

Luxe



Old Ground Hotel, Ennis

This ivy covered former manor house, dating back to the 18th century, offers luxury hotel accommodation in the center of Ennis. With modern amenities and an attentive staff, this hotel is deserving of its 4-stars.



Sheedy's Country House Hotel, Lisdoonvarna

Built in the 1700s, Sheedy's offers an idyllic escape with beautiful gardens and award winning cuisine. Lisdoonvarna is an interesting town with natural spa (next to the hotel). The hotel, a member of Ireland's Manor House Hotels, has been recommended by Fodors, New York Times and others.



Ballynahinch Castle, Recess

Built in the late 18th century, and boasting over 300 acres, this luxurious castle-hotel is one of Ireland's finest. Comfort without ostentation is the hallmark here- the restaurant is excellent and welcome friendly.